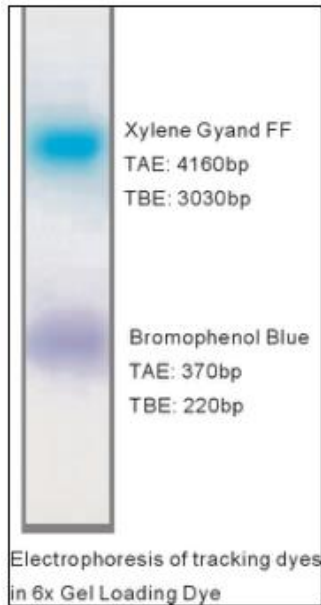




DONGSHENG BIOTECH

Tinción de carga 6X DNA, 5X1ml



Description:

Gel Loading Dye (6X) is a pre-mixed Loading Buffer with two tracking dye for agarose and non-denaturing polyacrylamide gel electrophoresis. EDTA is included to chelate magnesium (up to 10 mM) in enzymatic reactions, thereby stopping the reaction. Bromophenol blue and xylene cyanol are the standard tracking dye for electrophoresis.

Storage: Store at RT

Quality Assurance Statement

Gel Loading Dye(6X) is assayed for contaminating endonuclease, exonuclease and RNase activity.

Dye Migrate Rate (on a standard 1% TAE or TBE agarose gel)

Xylene Cyanol

TAE: 4160 bp, TBE: 3030 bp

Bromophenol Blue: TAE: 370 bp, TBE: 220 bp

Contents:

Gel Loading Dye (6X):

10 mM Tris-HCL (pH 7.6)

0.03% Bromophenol Blue

0.03% Xylene Cyanol

60% Glycerol

60 mM EDTA